

# BURNT CHIMNEY DISTRICT

Frequently Asked Questions . . . . .



▶ **WHAT IS A SOCIAL DISTRICT?**

A social district is a defined outdoor area where alcoholic beverages sold by an establishment licensed for the sale of alcoholic beverages for on-premises consumption may be consumed.

▶ **WHAT ARE THE DAYS AND HOURS OF OPERATION FOR THE SOCIAL DISTRICT?**

From January 1st-November 30th, the hours of operation for this social district shall be Monday through Sunday from 10AM to 10PM. From December 1st through December 31st, the hours of operation for this social district shall be Monday through Sunday from 10AM to 12AM. Exceptions could take place during a special event.

▶ **WHEN DOES THE SOCIAL DISTRICT TAKE EFFECT?**

Forest City’s social district will begin July 1, 2024.

▶ **CAN A CONVENIENCE STORE SELL ALCOHOLIC BEVERAGES TO-GO AS PART OF THE SOCIAL DISTRICT?**

No. Participating locations must have an ABC permit for on-site consumption as outlined in NCGS 18B-904.1(a).

▶ **CAN I BRING MY OWN ALCOHOLIC BEVERAGE INTO A SOCIAL DISTRICT?**

No. Alcoholic beverages must be sold by a permittee located within the social district. No personal beer, wine, or liquor can be brought into the social district.

▶ **CAN I TAKE AN ALCOHOLIC BEVERAGE IN MY SOCIAL DISTRICT CUP HOME WITH ME?**

No. Cups should be disposed of in a nearby recycling or garbage receptacle prior to exiting the social district.

▶ **CAN I TAKE MY ALCOHOLIC BEVERAGE INTO A VEHICLE WITHIN THE SOCIAL DISTRICT?**

No. No person shall possess an alcoholic beverage while driving a vehicle, including bicycles and scooters. Open containers of alcohol are also prohibited in the passenger area of any vehicle while on the right-of-way within a social district.

▶ **HOW CAN PARTICIPATING BUSINESSES BE IDENTIFIED?**

Participating businesses will have window signs displayed to identify that they have opted into the social district.

▶ **HOW DOES A BUSINESS OPT-IN TO THE SOCIAL DISTRICT?**

Businesses can submit the form below to identify whether that they want to opt-in or opt-out of the social district.

[Burnt Chimney District Permit](#)

▶ **HOW WILL THE SOCIAL DISTRICT BE ENFORCED?**

Alcohol Law Enforcement (ALE) and local law enforcement have jurisdiction over the social district.

# BURNT CHIMNEY DISTRICT

*Frequently Asked Questions* • • • • •



## ▶ **WHAT ARE THE REQUIREMENTS FOR AN ABC PERMITTEE BUSINESS TO PARTICIPATE?**

ABC permittees must sign the permit application that they understand and will abide by the rules and regulations of the social district. The permittee shall only sell alcoholic beverages for consumption in the “Burnt Chimney District” in a container that meets the following requirements:

- The container clearly identifies the permittee from which the alcoholic beverage was purchased.
- The container clearly displays a logo or some other mark that is unique to the Burnt Chimney District.
- The container shall display the time and date the beverage was purchased.
- The container is not comprised of glass.
- The container displays, in no less than 12-point font, the statement, “Drink Responsibly - Be 21.”
- The container shall not hold more than 16 fluid ounces.

## ▶ **HOW MANY ALCOHOLIC DRINKS CAN I PURCHASE AT ONE TIME IN A SOCIAL DISTRICT?**

A single patron cannot be sold or delivered more than two alcoholic beverage drinks at one time of beer or wine and more than one alcoholic beverage at one time of a drink containing liquor.

## ▶ **HOW WILL THE SOCIAL DISTRICT BOUNDARIES BE MARKED?**

Signage will be placed at the boundaries of the Town’s social district. Alcohol is not permitted outside beyond the social district boundaries.

## ▶ **WHAT HAPPENS IF I LEAVE THE SOCIAL DISTRICT BOUNDARIES WITH AN ALCOHOLIC BEVERAGE?**

Individuals who leave the social district with an alcoholic beverage can be criminally charged.

## ▶ **WHAT IF I AM A RETAILER AND I DO NOT WANT ALCOHOL INSIDE OF MY BUSINESS?**

All businesses located within the social district have the option to opt-out of the district. Signage indicating whether you are a participant in the social district or not will be provided by the Town.

# BURNT CHIMNEY DISTRICT

Frequently Asked Questions . . . . .



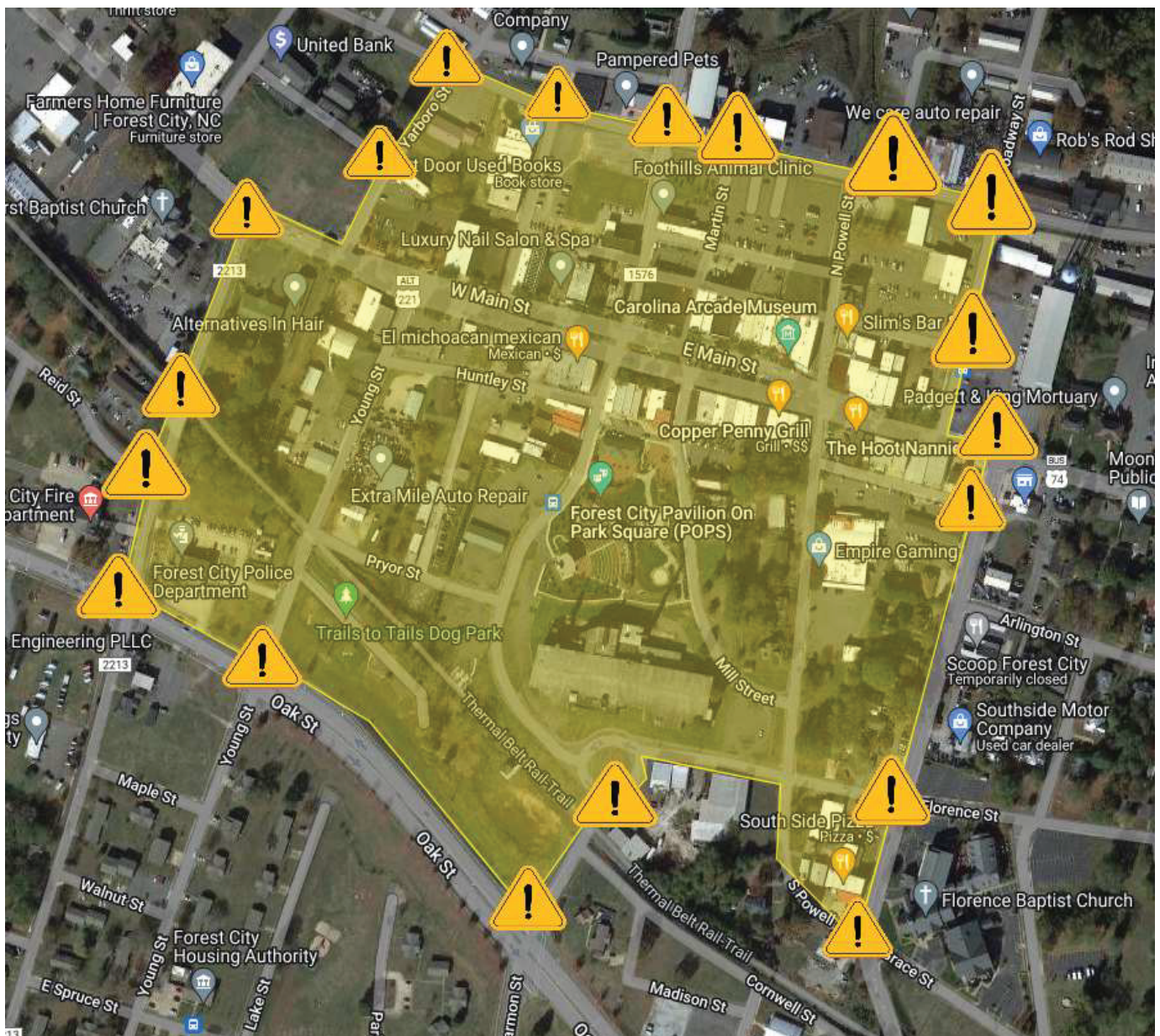
## The Burnt Chimney District Map



Social District Signage



Social District Boundary





# BURNT CHIMNEY DISTRICT

Frequently Asked Questions . . . . .



## BEVERAGES SOLD HERE

Businesses within the social district with a BLUE social district sticker are ABC Permitted Establishments where to-go alcoholic beverages can be purchased. Outside beverages, in a social district cup or otherwise, may not be brought inside these establishments.



## BEVERAGES WELCOME

Retail or other non-alcohol serving establishments with a GREEN social district sticker welcome outside beverages in a social district cup.



## PLEASE NO BEVERAGES

Businesses within the social district with NO sticker or with a RED sticker do not welcome outside beverages in a social district cup.